



Co-funded by  
the Health Programme  
of the European Union

Mine Project - Grant Agreement Agreement 2013 12 05

# **Annex I**

## **Results of General Questionnaire**

### **WP4**

**This report was prepared within the framework of the MINE Mesothelioma Network Project, carried on with EU contribution.**

*This reflects only the authors' view and CHAFFEA (Consumer, Health, Agriculture and Food Executive Agency) and the European Commission are not responsible for any use that may be made of the information it contains*



Co-funded by  
the Health Programme  
of the European Union

## Work package 4 – Summary of Results

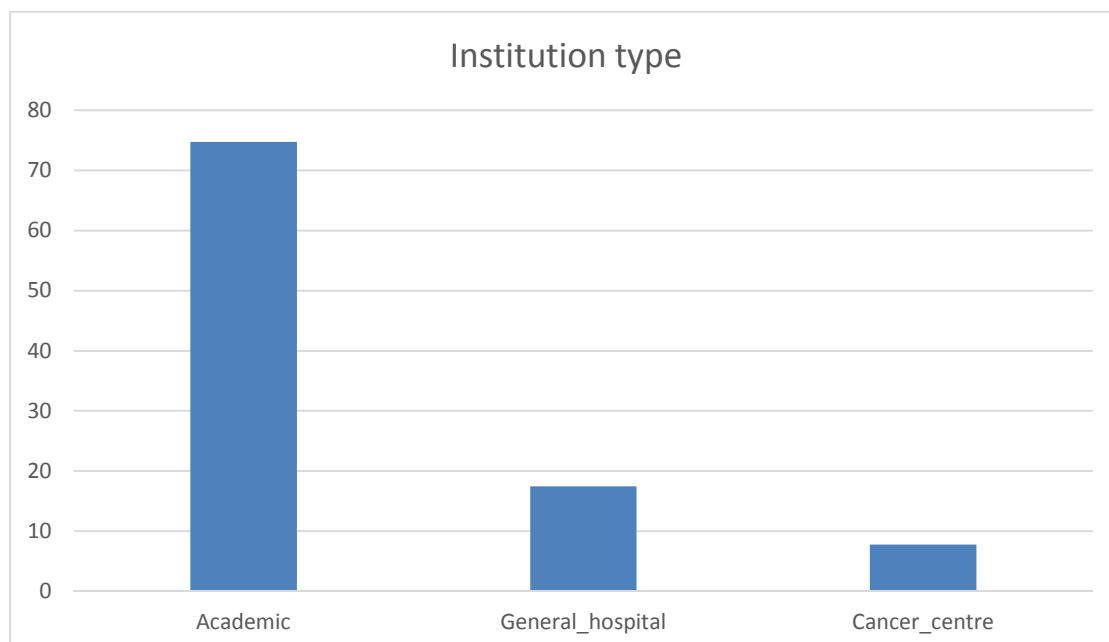
The objective of WP4 is to provide information on diagnostic and therapeutic protocols in Europe and quantify the participation in clinical trials.

After discussion with all European partners a survey has been designed to acquire information from all participating European countries. The survey was provided on the MINE website and can be read there (<http://www.euprojectmine.eu/index.php/restricted-area>).

After providing the survey on the website clinical centers in each country have been contacted and asked to fill out the survey.

### **Results**

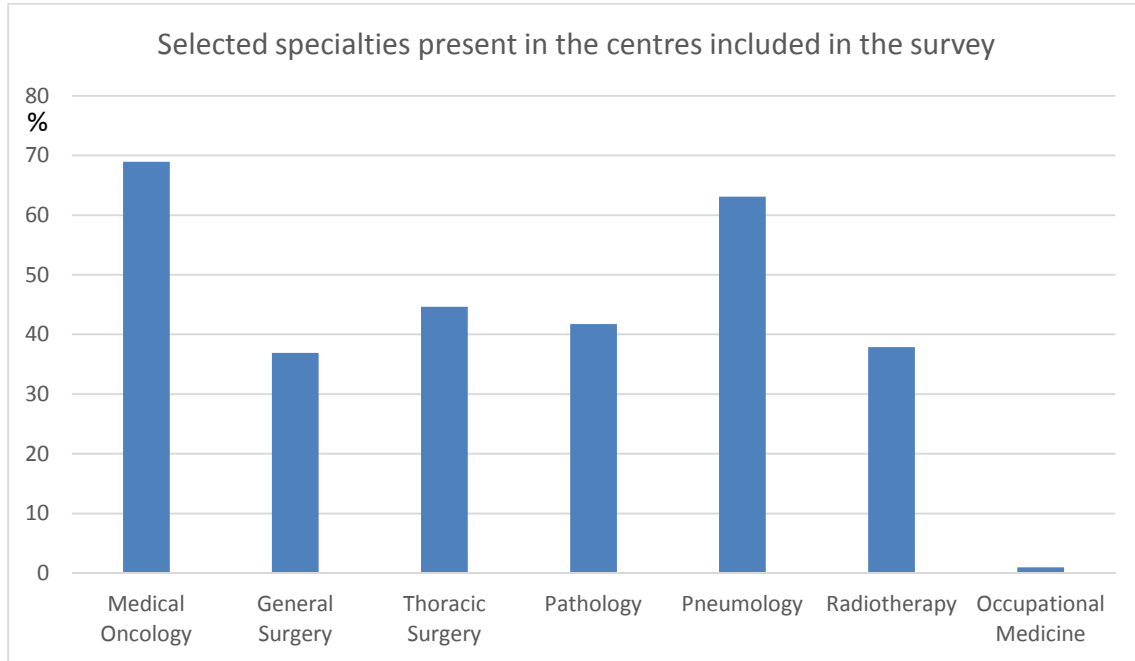
In each country the number of centers contacted differed. The centers of excellence were identified by the representatives of each country. A complete number of centers in the countries is not known. Most centers were academic (77%), but also general hospitals (18%) and specialized cancer centers (8%) were represented:





Co-funded by  
the Health Programme  
of the European Union

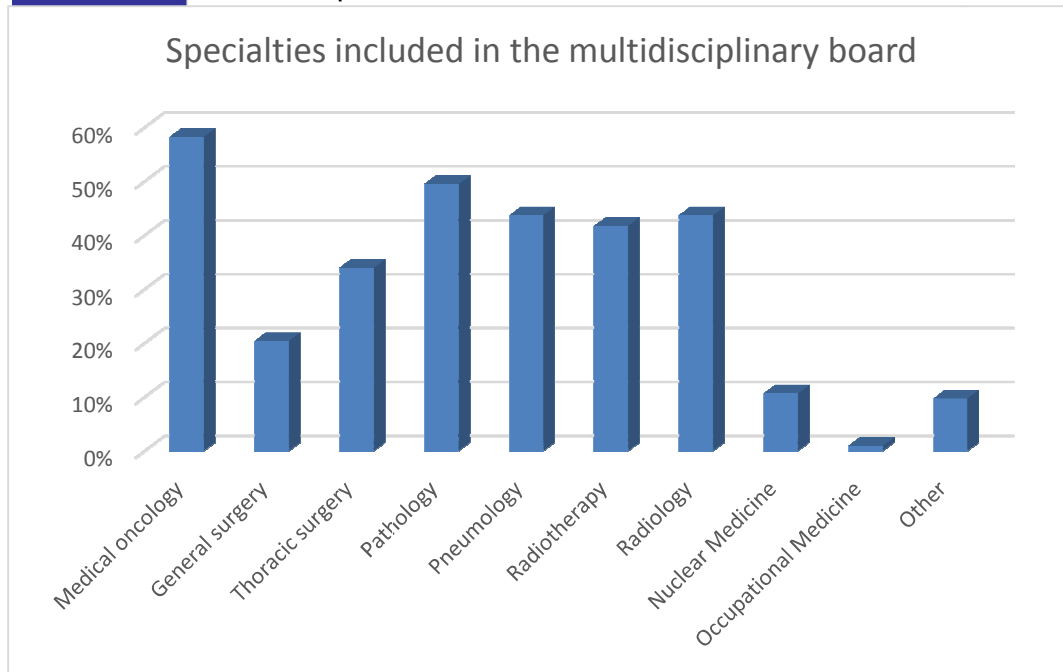
Below are the specialties of centres included in the survey:



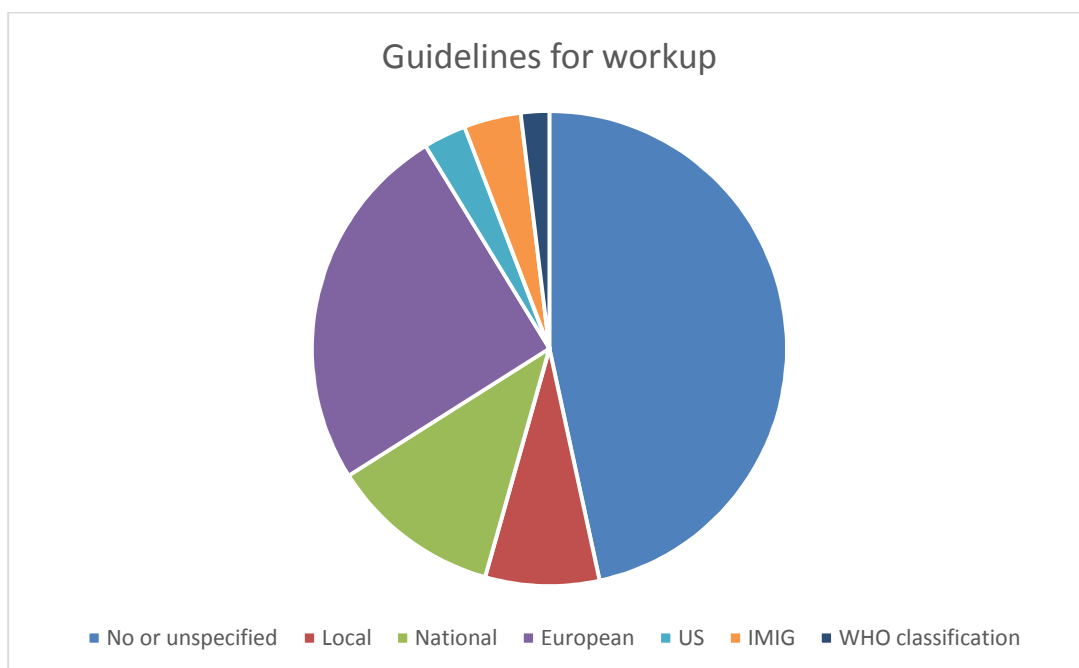
All involved centers have a multidisciplinary boards in place to make treatment decisions. All relevant specialties are included, with the predominant specialty being Medical Oncologist:



Co-funded by  
the Health Programme  
of the European Union



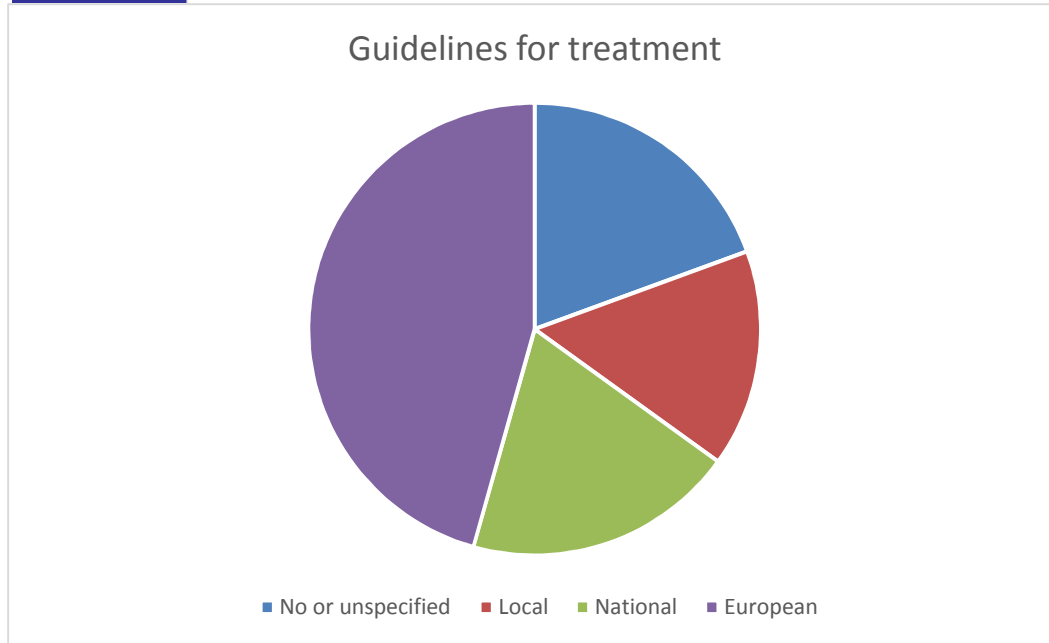
For the **diagnostic work up** the vast majority of physicians do not use any specific guidelines. Most physicians use EU guidelines. A minority is using local or national or US guidelines:



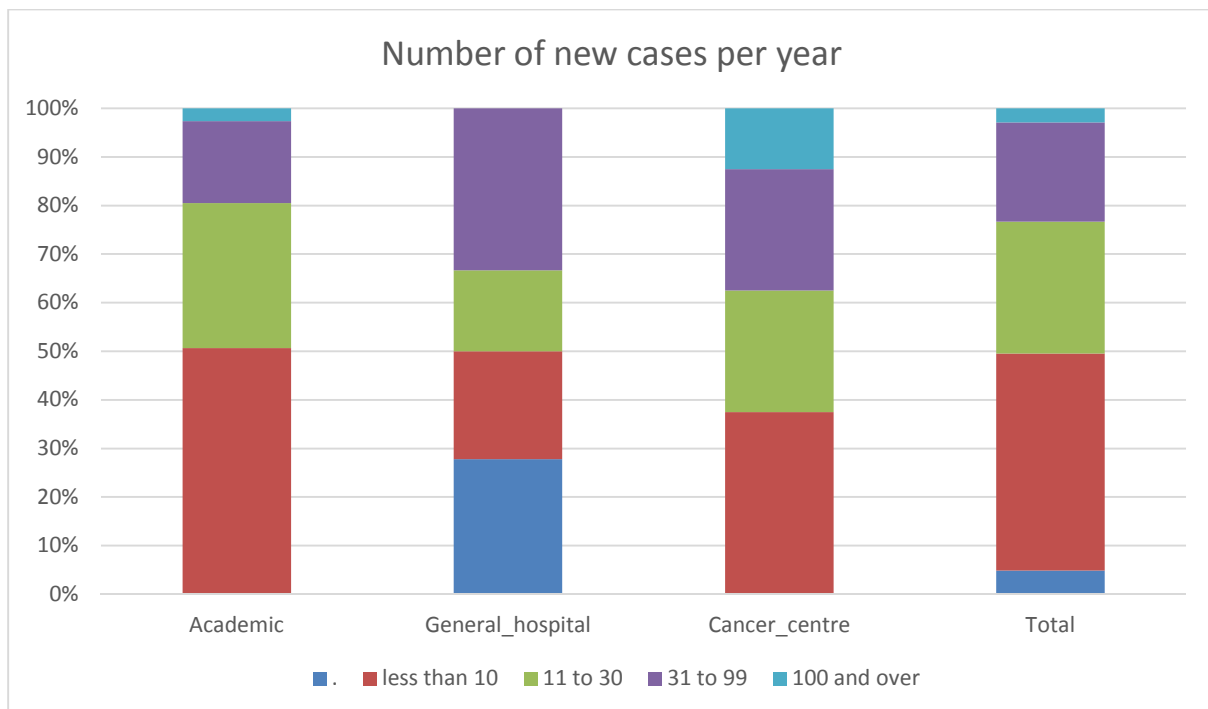
For **treatment decisions** interestingly the vast majority of physicians use EU guidelines, followed by local or national guidelines. No US guidelines are used. A substantial proportion (19%) does not use any specific guidelines:



Co-funded by  
the Health Programme  
of the European Union



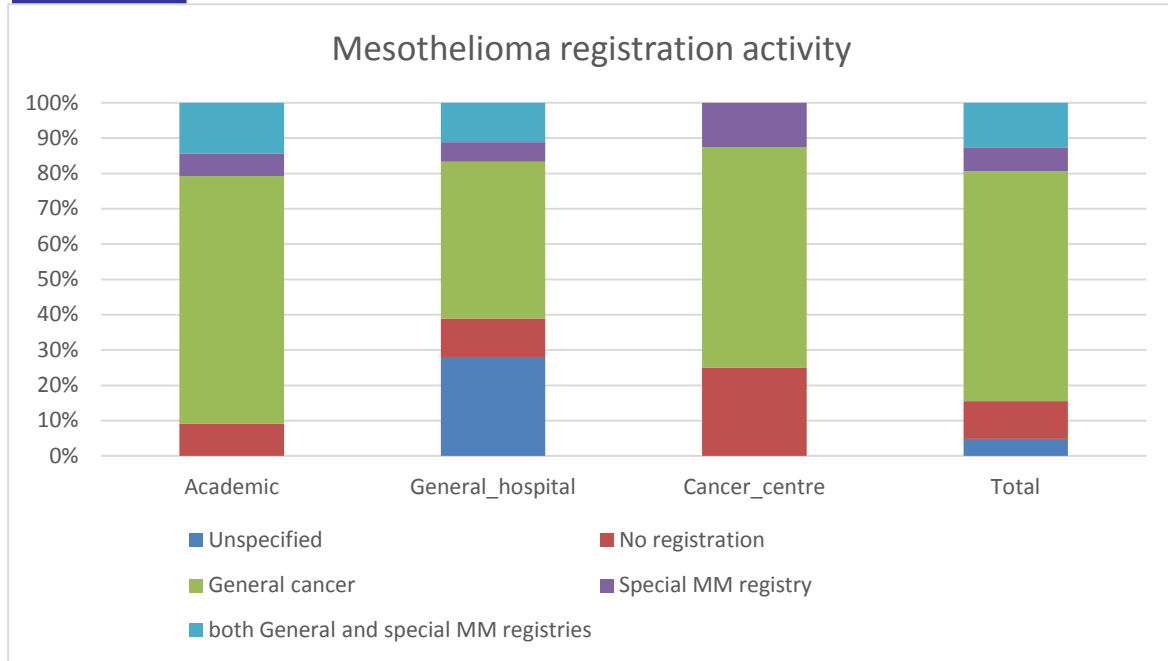
There was no clear preference, whether Mesothelioma patients are preferentially treated in academic centers, versus general hospitals or cancer centers. Most centers have a low volume of patients below 10/year. There are some high volume centers in each category below:



The majority of centers do have a cancer registry, mostly being a general cancer registry. Very few centers do have a special Mesothelioma registry:



Co-funded by  
the Health Programme  
of the European Union



#### Summary:

The survey validated our perception, that there is no systematic approach in Europe for the diagnosis and treatment of Mesothelioma. Even in selected centers across Europe the volume of Mesothelioma patients treated is low, and no consistent guidelines do exist to guide diagnostic work up and treatment decisions.

The survey confirms, that there is an urgent need to educate physicians, and implement international guidelines into clinical practice to help physicians in the management of this complex disease.

The FREQ Procedure / Coding is 0= NO; 1= YES. The same applies to all variables coded 0 or 1 /

**INSTITUTION**

Academic	Frequency	Percent	Cumulative Frequency	Cumulative Percent
0	26	25.24	26	25.24
1	77	74.76	103	100.00

Cancer_centre	Frequency	Percent	Cumulative Frequency	Cumulative Percent
0	79	76.70	79	76.70
1	24	23.30	103	100.00

Pneumology_ clinic	Frequency	Percent	Cumulative Frequency	Cumulative Percent
0	98	95.15	98	95.15
1	5	4.85	103	100.00

General_hospital	Frequency	Percent	Cumulative Frequency	Cumulative Percent
0	89	86.41	89	86.41
1	14	13.59	103	100.00

**NUMBER of NEW MESOTHELIOMA CASES DIAGNOSED IN THE HOSPITAL PER YEAR**

n_new_mm_ codednum	Frequency	Percent	Cumulative Frequency	Cumulative Percent
.	5	4.85	5	4.85
2	3	2.91	8	7.77
3	5	4.85	13	12.62
4	2	1.94	15	14.56
5	10	9.71	25	24.27
6	4	3.88	29	28.16
7	3	2.91	32	31.07
8	3	2.91	35	33.98
9	1	0.97	36	34.95
10	15	14.56	51	49.51
12	3	2.91	54	52.43
13	4	3.88	58	56.31
15	9	8.74	67	65.05
17	2	1.94	69	66.99
20	2	1.94	71	68.93
22	1	0.97	72	69.90
25	3	2.91	75	72.82
30	4	3.88	79	76.70
33	1	0.97	80	77.67
35	1	0.97	81	78.64
37	1	0.97	82	79.61
40	6	5.83	88	85.44
50	4	3.88	92	89.32
60	4	3.88	96	93.20
65	1	0.97	97	94.17
70	2	1.94	99	96.12
92	1	0.97	100	97.09
100	1	0.97	101	98.06
140	1	0.97	102	99.03
200	1	0.97	103	100.00

The FREQ Procedure  
**SPECIALTIES IN THE INSTITUTION**

med_onco	Frequency	Percent	Cumulative Frequency	Cumulative Percent
0	32	31.07	32	31.07
1	71	68.93	103	100.00

GEN_SURG	Frequency	Percent	Cumulative Frequency	Cumulative Percent
0	65	63.11	65	63.11
1	38	36.89	103	100.00

thor_surg	Frequency	Percent	Cumulative Frequency	Cumulative Percent
0	57	55.34	57	55.34
1	46	44.66	103	100.00

pathology	Frequency	Percent	Cumulative Frequency	Cumulative Percent
0	60	58.25	60	58.25
1	43	41.75	103	100.00

pneumology	Frequency	Percent	Cumulative Frequency	Cumulative Percent
0	38	36.89	38	36.89
1	65	63.11	103	100.00

radiotherapy	Frequency	Percent	Cumulative Frequency	Cumulative Percent
0	64	62.14	64	62.14
1	39	37.86	103	100.00

RADIOLOGY	Frequency	Percent	Cumulative Frequency	Cumulative Percent
0	101	98.06	101	98.06
1	2	1.94	103	100.00

Nuclear_med	Frequency	Percent	Cumulative Frequency	Cumulative Percent
0	101	98.06	101	98.06
1	2	1.94	103	100.00

palliativecare	Frequency	Percent	Cumulative Frequency	Cumulative Percent
0	101	98.06	101	98.06
1	2	1.94	103	100.00



## The FREQ Procedure

clin_trial_ centre	Frequency	Percent	Cumulative Frequency	Cumulative Percent
0	102	99.03	102	99.03
1	1	0.97	103	100.00

med_genet	Frequency	Percent	Cumulative Frequency	Cumulative Percent
0	102	99.03	102	99.03
1	1	0.97	103	100.00

occup_med	Frequency	Percent	Cumulative Frequency	Cumulative Percent
0	102	99.03	102	99.03
1	1	0.97	103	100.00

**REPORT OF MM CASES TO CANCER REGISTRIES**

**Report\_MM\_code**

Report_MM_code	Frequency	Percent	Cumulative Frequency	Cumulative Percent
Unspecified	5	4.85	5	4.85
0 no registration	11	10.68	16	15.53
1 local registry	32	31.07	48	46.60
2 Regional/national registry	24	23.30	72	69.90
3 both 1 and 2	11	10.68	83	80.58
4 Special MM registry	7	6.80	90	87.38
5 both 1 and 4	3	2.91	93	90.29
6 both 2 and 4	7	6.80	100	97.09
7 both 1, 2 and 4	3	2.91	103	100.00

**USE OF GUIDELINES FOR DIAGNOSTIC WORKUP**

guideline_workup	Guidelines_wk_list_codes	Frequency	Percent	Cumulative Frequency	Cumulative Percent
	Unspecified	10	9.71	10	9.71
n	Unspecified	22	21.36	32	31.07
y	Unspecified	16	15.53	48	46.60
y	Local (includes Rhone-Alpes)	8	7.77	56	54.37
y	National (including INCA, italian)	12	11.65	68	66.02
y	European (ESMO, ERS, ETS)	26	25.24	94	91.26
y	US (NCCN)	3	2.91	97	94.17
y	IMIG (Husain et al)	4	3.88	101	98.06
y	WHO classification	2	1.94	103	100.00

PROPORTION OF MM CASES DIAGNOSED USING DIFFERENT PEOCEDURES. THE VALUES (FROM 0 TO 100) ARE PERCENTAGES

imaging\_only

imaging_only	Frequency	Percent	Cumulative Frequency	Cumulative Percent
.	44	42.72	44	42.72
0	31	30.10	75	72.82
1	5	4.85	80	77.67
2	2	1.94	82	79.61
5	14	13.59	96	93.20
7	1	0.97	97	94.17
10	3	2.91	100	97.09
20	1	0.97	101	98.06
28	1	0.97	102	99.03
100	1	0.97	103	100.00

effusion\_only

effusion_only	Frequency	Percent	Cumulative Frequency	Cumulative Percent
.	39	37.86	39	37.86
0	24	23.30	63	61.17
1	2	1.94	65	63.11
2	2	1.94	67	65.05
3	1	0.97	68	66.02
5	11	10.68	79	76.70
8	1	0.97	80	77.67
10	10	9.71	90	87.38
15	1	0.97	91	88.35
20	7	6.80	98	95.15
25	2	1.94	100	97.09
30	1	0.97	101	98.06
40	1	0.97	102	99.03
50	1	0.97	103	100.00

histology

histology	Frequency	Percent	Cumulative Frequency	Cumulative Percent
.	38	36.89	38	36.89
0	5	4.85	43	41.75
10	2	1.94	45	43.69
20	2	1.94	47	45.63
25	1	0.97	48	46.60
30	1	0.97	49	47.57
40	1	0.97	50	48.54
50	2	1.94	52	50.49
60	1	0.97	53	51.46
70	4	3.88	57	55.34
75	1	0.97	58	56.31
80	7	6.80	65	63.11
85	3	2.91	68	66.02
90	5	4.85	73	70.87
95	4	3.88	77	74.76
98	2	1.94	79	76.70
99	1	0.97	80	77.67
100	23	22.33	103	100.00

## The FREQ Procedure

## fine\_needle

fine_needle	Frequency	Percent	Cumulative Frequency	Cumulative Percent
.	53	51.46	53	51.46
0	20	19.42	73	70.87
1	1	0.97	74	71.84
2	2	1.94	76	73.79
5	9	8.74	85	82.52
7	1	0.97	86	83.50
10	6	5.83	92	89.32
15	2	1.94	94	91.26
20	3	2.91	97	94.17
25	2	1.94	99	96.12
30	2	1.94	101	98.06
40	1	0.97	102	99.03
70	1	0.97	103	100.00

## core\_needle

core_needle	Frequency	Percent	Cumulative Frequency	Cumulative Percent
.	44	42.72	44	42.72
0	12	11.65	56	54.37
1	1	0.97	57	55.34
4	1	0.97	58	56.31
5	7	6.80	65	63.11
7	1	0.97	66	64.08
10	11	10.68	77	74.76
15	3	2.91	80	77.67
20	7	6.80	87	84.47
25	2	1.94	89	86.41
30	2	1.94	91	88.35
40	2	1.94	93	90.29
45	1	0.97	94	91.26
50	3	2.91	97	94.17
60	2	1.94	99	96.12
80	3	2.91	102	99.03
100	1	0.97	103	100.00

## The FREQ Procedure

## thoracoscopy

thoracoscopy	Frequency	Percent	Cumulative Frequency	Cumulative Percent
.	33	32.04	33	32.04
2	1	0.97	34	33.01
10	3	2.91	37	35.92
15	1	0.97	38	36.89
18	1	0.97	39	37.86
20	3	2.91	42	40.78
25	2	1.94	44	42.72
30	6	5.83	50	48.54
35	1	0.97	51	49.51
40	2	1.94	53	51.46
45	1	0.97	54	52.43
50	7	6.80	61	59.22
55	1	0.97	62	60.19
60	7	6.80	69	66.99
65	1	0.97	70	67.96
70	2	1.94	72	69.90
75	2	1.94	74	71.84
80	11	10.68	85	82.52
85	4	3.88	89	86.41
90	4	3.88	93	90.29
95	2	1.94	95	92.23
98	2	1.94	97	94.17
100	6	5.83	103	100.00

## open\_biopsy

open_biopsy	Frequency	Percent	Cumulative Frequency	Cumulative Percent
.	39	37.86	39	37.86
0	9	8.74	48	46.60
1	1	0.97	49	47.57
2	3	2.91	52	50.49
3	1	0.97	53	51.46
5	9	8.74	62	60.19
7	1	0.97	63	61.17
10	19	18.45	82	79.61
15	3	2.91	85	82.52
20	6	5.83	91	88.35
25	1	0.97	92	89.32
30	1	0.97	93	90.29
40	2	1.94	95	92.23
45	1	0.97	96	93.20
50	2	1.94	98	95.15
60	1	0.97	99	96.12
80	1	0.97	100	97.09
90	1	0.97	101	98.06
100	2	1.94	103	100.00

The FREQ Procedure

combined\_methods

combined_methods	Frequency	Percent	Cumulative Frequency	Cumulative Percent
.	59	57.28	59	57.28
0	14	13.59	73	70.87
5	1	0.97	74	71.84
7	1	0.97	75	72.82
8	1	0.97	76	73.79
10	4	3.88	80	77.67
20	7	6.80	87	84.47
25	1	0.97	88	85.44
30	3	2.91	91	88.35
50	1	0.97	92	89.32
70	1	0.97	93	90.29
80	1	0.97	94	91.26
100	9	8.74	103	100.00

others

others	Frequency	Percent	Cumulative Frequency	Cumulative Percent
.	83	80.58	83	80.58
0	17	16.50	100	97.09
5	1	0.97	101	98.06
27	1	0.97	102	99.03
30	1	0.97	103	100.00

DESCRIPTIVE DETAILS

histology\_specify

histology_specify	Frequency	Percent	Cumulative Frequency	Cumulative Percent
	84	81.55	84	81.55
All samples are kept as paraffin embedded blocks	1	0.97	85	82.52
Conventional staining + immunocytochemistry	1	0.97	86	83.50
Core needle biopsy, VATS, open surgery	1	0.97	87	84.47
MM épithélioide (80%)	1	0.97	88	85.44
Medical Thoracoscopy (MT) usually	1	0.97	89	86.41
Pleural closed biopsy, throacoscopy, thoracotomy	1	0.97	90	87.38
Pleural needle biopsy (Stoicescu-Bercea needle, pattentd)	1	0.97	91	88.35
VAT	1	0.97	92	89.32
always histology with IHC	1	0.97	93	90.29
biopsies per-thoracoscopy	1	0.97	94	91.26
biopsy either CT guided or surgical	1	0.97	95	92.23
fine needle biopsy and more frequently (by far) confirmation by VAT	1	0.97	96	93.20
for decision about cytotoxic treatment we need the confirmation that MM is histologically revealed	1	0.97	97	94.17
histology	1	0.97	98	95.15
histology with IHC	1	0.97	99	96.12
intraoperative pleural biopsy and histology combined with IHC	1	0.97	100	97.09
specialist thoracic pathologist diagnoses according ot 'best practice'	1	0.97	101	98.06
toracosopic biopsy	1	0.97	102	99.03
usual stain and IHC	1	0.97	103	100.00

The FREQ Procedure

combined\_specify

combined_specify	Frequency	Percent	Cumulative Frequency	Cumulative Percent
	83	80.58	83	80.58
80% VATS with histology	1	0.97	84	81.55
Cyto + MT	1	0.97	85	82.52
FNA/VATS	1	0.97	86	83.50
Imaging, pleural effusion, histology, video-assisted thoracoscopy	1	0.97	87	84.47
Pleural cytology + biopsy as above	1	0.97	88	85.44
Pleural effusion cytology + biopsy (VATS, mainly)	1	0.97	89	86.41
Video assisted thoracoscopy+Histology	1	0.97	90	87.38
Video-assisted thoracoscopy+core needle biopsy	1	0.97	91	88.35
all of the above	1	0.97	92	89.32
citology+ pleuroscopy/VATS ; citology+core needle	1	0.97	93	90.29
core needle + cytology + video assisted surgery	1	0.97	94	91.26
depend on presentation, age, comorbidities	1	0.97	95	92.23
histology , citology, biopsy	1	0.97	96	93.20
histology plus immunohistochemistry	1	0.97	97	94.17
histology with open surgical byopsy or core needle biopsy	1	0.97	98	95.15
one then another	1	0.97	99	96.12
pleural effusion + VATS biopsy	1	0.97	100	97.09
pleural effusion + core needle biopsy or VATS or open sugivical biopsy (less common)	1	0.97	101	98.06
usaully cytology of effuison and VATS biopsy	1	0.97	102	99.03
vats with cytology PET guided biopsy	1	0.97	103	100.00

others\_specify

others_specify	Frequency	Percent	Cumulative Frequency	Cumulative Percent
	102	99.03	102	99.03
EBUS	1	0.97	103	100.00

blocks_av_percent	blocks_available	Frequency	Percent	Cumulative Frequency	Cumulative Percent
.		1	0.97	1	0.97
.	Yes	20	19.42	21	20.39
.	no	11	10.68	32	31.07
10	Yes	1	0.97	33	32.04
30	Yes	1	0.97	34	33.01
50	Yes	3	2.91	37	35.92
60	Yes	3	2.91	40	38.83
70	Yes	4	3.88	44	42.72
75	Yes	2	1.94	46	44.66
80	Yes	9	8.74	55	53.40
85	Yes	1	0.97	56	54.37
90	Yes	8	7.77	64	62.14
92	Yes	1	0.97	65	63.11
95	Yes	1	0.97	66	64.08
100	Yes	37	35.92	103	100.00



The FREQ Procedure

IHC

IHC	Frequency	Percent	Cumulative Frequency	Cumulative Percent
	1	0.97	1	0.97
Yes	92	89.32	93	90.29
no	10	9.71	103	100.00

IHC_specify	IHC	Frequency	Percent	Cumulative Frequency	Cumulative Percent
		1	0.97	1	0.97
	Yes	50	48.54	51	49.51
	no	10	9.71	61	59.22
100	Yes	1	0.97	62	60.19
50	Yes	1	0.97	63	61.17
70%	Yes	1	0.97	64	62.14
A COMPLET PANNEL	Yes	1	0.97	65	63.11
According guidelines and reference center	Yes	1	0.97	66	64.08
According to	Yes	1	0.97	67	65.05
Calretinin	Yes	1	0.97	68	66.02
Calretinin, CK5/6 and WT1. CK7, BEREPA, TTF-1 and CEA	Yes	1	0.97	69	66.99
Calretinin, HBME1, Podoplanin, WT1, CK5, for positive diagnostic and many other for negative control	Yes	1	0.97	70	67.96
Calretinin, WT1	Yes	1	0.97	71	68.93
Calretinin, WT1, CK5/6	Yes	1	0.97	72	69.90
EMA, Desmin, Thrombomodulin, Keratin 5/6, CEA	Yes	1	0.97	73	70.87
ERS guidelines	Yes	1	0.97	74	71.84
Especially to differentiate from adenocarcinoma	Yes	1	0.97	75	72.82
I use monoclonal antibodies: Calretinin, mesothelin, D240, Wt1, CEA, TTF1	Yes	1	0.97	76	73.79
IHC is used for confirming the pathology result, but it is not available in our institution	Yes	1	0.97	77	74.76
In some cases, if pathologist is unsure	Yes	1	0.97	78	75.73
Only if histology is not relevant	Yes	1	0.97	79	76.70
Panel of several monoclonal antibodies, depending on type suspected	Yes	1	0.97	80	77.67
Standard pathology IHC for mess	Yes	1	0.97	81	78.64
TTF1, CEA, calretinine, vimentine, CK7/20, WT1	Yes	1	0.97	82	79.61
The IMP/WHO and the International Mesothelioma Interest Group (IMIG)	Yes	1	0.97	83	80.58
Various markers (ACE negative), EMA, Vimentine, Keratine....	Yes	1	0.97	84	81.55
Vimentin, AE1-AE3, calretinin, WT-1, CK5-6, D2-40, HMB1, CK20, TTF-1	Yes	1	0.97	85	82.52
and FISH for P16 deletion	Yes	1	0.97	86	83.50
and central national review	Yes	1	0.97	87	84.47
calretinin, CEA, HBME, CK7, CK20	Yes	1	0.97	88	85.44
calretinin, D2-40, CK 5/6 (pos), BerEP4, MOC-31, TTF-1, (neg)	Yes	1	0.97	89	86.41
calretinin, D2-40, CK5/6	Yes	1	0.97	90	87.38
calretinina	Yes	1	0.97	91	88.35
calretinine, CEA, CK 5/6	Yes	1	0.97	92	89.32
calretinine, citokeratine	Yes	1	0.97	93	90.29
claretinina	Yes	1	0.97	94	91.26
in most; calretinin WT1 and CK5/6 expected to be positive	Yes	1	0.97	95	92.23
meso path panel	Yes	1	0.97	96	93.20
panel markers	Yes	1	0.97	97	94.17
panel of antibody: Calretinina, mesothelin, D240, WT1, CEA, and others	Yes	1	0.97	98	95.15
see my pathologist !	Yes	1	0.97	99	96.12
usuals Ac, done by the pathologist	Yes	1	0.97	100	97.09
we use IHC in all cases for the diagnosis confirmation	Yes	1	0.97	101	98.06
when needed	Yes	1	0.97	102	99.03
wt1 ,calretinin, CK 5-6	Yes	1	0.97	103	100.00

## The FREQ Procedure

## pet

pet	Frequency	Percent	Cumulative Frequency	Cumulative Percent
.	30	29.13	30	29.13
0	2	1.94	32	31.07
5	5	4.85	37	35.92
10	7	6.80	44	42.72
15	2	1.94	46	44.66
20	5	4.85	51	49.51
25	1	0.97	52	50.49
30	7	6.80	59	57.28
35	1	0.97	60	58.25
40	1	0.97	61	59.22
50	11	10.68	72	69.90
60	5	4.85	77	74.76
80	7	6.80	84	81.55
90	4	3.88	88	85.44
100	15	14.56	103	100.00

## mri

mri	Frequency	Percent	Cumulative Frequency	Cumulative Percent
.	48	46.60	48	46.60
0	14	13.59	62	60.19
1	3	2.91	65	63.11
3	3	2.91	68	66.02
5	8	7.77	76	73.79
7	1	0.97	77	74.76
10	12	11.65	89	86.41
15	1	0.97	90	87.38
20	4	3.88	94	91.26
30	2	1.94	96	93.20
40	2	1.94	98	95.15
50	2	1.94	100	97.09
70	2	1.94	102	99.03
80	1	0.97	103	100.00

## chest\_ct

chest_ct	Frequency	Percent	Cumulative Frequency	Cumulative Percent
.	24	23.30	24	23.30
20	1	0.97	25	24.27
50	1	0.97	26	25.24
60	1	0.97	27	26.21
70	1	0.97	28	27.18
80	3	2.91	31	30.10
90	6	5.83	37	35.92
95	1	0.97	38	36.89
99	1	0.97	39	37.86
100	64	62.14	103	100.00

## The FREQ Procedure

chest\_xray

chest_xray	Frequency	Percent	Cumulative Frequency	Cumulative Percent
.	50	48.54	50	48.54
0	7	6.80	57	55.34
5	2	1.94	59	57.28
10	1	0.97	60	58.25
50	1	0.97	61	59.22
60	1	0.97	62	60.19
100	41	39.81	103	100.00

**SPECIALTIES INVOLVED IN THE MULTIDISCIPLINARY BOARD (CODING 0=No, 1=yes)**

MB_med_onco	Frequency	Percent	Cumulative Frequency	Cumulative Percent
0	43	41.75	43	41.75
1	60	58.25	103	100.00

MB_GEN_SURG	Frequency	Percent	Cumulative Frequency	Cumulative Percent
0	82	79.61	82	79.61
1	21	20.39	103	100.00

MB_thor_surg	Frequency	Percent	Cumulative Frequency	Cumulative Percent
0	68	66.02	68	66.02
1	35	33.98	103	100.00

MB_pathology	Frequency	Percent	Cumulative Frequency	Cumulative Percent
0	52	50.49	52	50.49
1	51	49.51	103	100.00

MB_pneumology	Frequency	Percent	Cumulative Frequency	Cumulative Percent
0	58	56.31	58	56.31
1	45	43.69	103	100.00

MB_radiotherapy	Frequency	Percent	Cumulative Frequency	Cumulative Percent
0	60	58.25	60	58.25
1	43	41.75	103	100.00

MB_RADIOLOGY	Frequency	Percent	Cumulative Frequency	Cumulative Percent
0	58	56.31	58	56.31
1	45	43.69	103	100.00

## The FREQ Procedure

MB_Nuclear_med	Frequency	Percent	Cumulative Frequency	Cumulative Percent
0	92	89.32	92	89.32
1	11	10.68	103	100.00

MB_occup_med	Frequency	Percent	Cumulative Frequency	Cumulative Percent
0	102	99.03	102	99.03
1	1	0.97	103	100.00

mb_OTHER	Frequency	Percent	Cumulative Frequency	Cumulative Percent
0	93	90.29	93	90.29
1	10	9.71	103	100.00

**Guidelines for treatment**

## guidelines\_used

guidelines_ used	Frequency	Percent	Cumulative Frequency	Cumulative Percent
	2	1.94	2	1.94
Yes	86	83.50	88	85.44
no	15	14.56	103	100.00

## guidelines\_used\_comments

guidelines_ used_comments	Frequency	Percent	Cumulative Frequency	Cumulative Percent
	103	100.00	103	100.00

## guidelines\_what

guidelines_what	Frequency	Percent	Cumulative Frequency	Cumulative Percent
	20	19.42	20	19.42
ESMO	16	15.53	36	34.95
Local	17	16.50	53	51.46
Local, ESMO	4	3.88	57	55.34
Local, National	1	0.97	58	56.31
Local, National, ESMO	10	9.71	68	66.02
National	18	17.48	86	83.50
National, ESMO	17	16.50	103	100.00

The FREQ Procedure

Guidelines\_what\_codes

Guidelines_what_codes	Frequency	Percent	Cumulative Frequency	Cumulative Percent
Unspecified	20	19.42	20	19.42
Local (includes Rhone-Alpes)	16	15.53	36	34.95
National (including INCA, italian)	20	19.42	56	54.37
European (ESMO, ERS, ETS)	47	45.63	103	100.00

guidelines\_what\_comment

guidelines_what_comment	Frequency	Percent	Cumulative Frequency	Cumulative Percent
	85	82.52	85	82.52
+ ERS	1	0.97	86	83.50
Currently no UK guidelines. BTS guidelines in production	1	0.97	87	84.47
ERS Guidelines	1	0.97	88	85.44
ERS guidelines and french guidelines (INCa)	1	0.97	89	86.41
ESCTS/ERS/ESMO 2010	1	0.97	90	87.38
ESMO original or translated	1	0.97	91	88.35
INCA	2	1.94	93	90.29
Italian Consensus	1	0.97	94	91.26
National are based on ESMO and ERS/ESTS	1	0.97	95	92.23
Oncologic treatment	1	0.97	96	93.20
Oncolor	1	0.97	97	94.17
Regional (Rhone Alpes Auvergne)	1	0.97	98	95.15
alimta is the standard chemo option, in combination with platinum	1	0.97	99	96.12
local guidelines built with national and international guidelines	1	0.97	100	97.09
mesoclin	1	0.97	101	98.06
nccn	1	0.97	102	99.03
video-assisted pleurodesis and pleurectomy-decortication and oncologic treatment	1	0.97	103	100.00

guidelines_used	Guidelines_what_codes	Frequency	Percent	Cumulative Frequency	Cumulative Percent
	Unspecified	2	1.94	2	1.94
Yes	Unspecified	3	2.91	5	4.85
Yes	Local (includes Rhone-Alpes)	16	15.53	21	20.39
Yes	National (including INCA, italian)	20	19.42	41	39.81
Yes	European (ESMO, ERS, ETS)	47	45.63	88	85.44
no	Unspecified	15	14.56	103	100.00

TRIALS (1= YES)

Trial\_chemoth

Trial_chemoth_	Frequency	Percent	Cumulative Frequency	Cumulative Percent
1	92	89.32	92	89.32
	11	10.68	103	100.00



The FREQ Procedure

Trial\_targeted\_th

Trial_targeted_th	Frequency	Percent	Cumulative Frequency	Cumulative Percent
.	66	64.08	66	64.08
1	37	35.92	103	100.00

Trial\_Immuno\_th

Trial_Immuno_th	Frequency	Percent	Cumulative Frequency	Cumulative Percent
.	90	87.38	90	87.38
1	13	12.62	103	100.00

Trial\_other

Trial_other	Frequency	Percent	Cumulative Frequency	Cumulative Percent
.	96	93.20	96	93.20
1	7	6.80	103	100.00

Trial\_surgery

Trial_surgery	Frequency	Percent	Cumulative Frequency	Cumulative Percent
.	102	99.03	102	99.03
1	1	0.97	103	100.00

Trial\_Radioth

Trial_Radioth	Frequency	Percent	Cumulative Frequency	Cumulative Percent
.	100	97.09	100	97.09
1	3	2.91	103	100.00

Trial\_NON\_meso

Trial_NON_meso	Frequency	Percent	Cumulative Frequency	Cumulative Percent
.	103	100.00	103	100.00

Trial\_Unknown

Trial_Unknown	Frequency	Percent	Cumulative Frequency	Cumulative Percent
.	98	95.15	98	95.15
1	5	4.85	103	100.00

The FREQ Procedure

trials\_aware

trials_aware	Frequency	Percent	Cumulative Frequency	Cumulative Percent
	3	2.91	3	2.91
Yes	34	33.01	37	35.92
no	66	64.08	103	100.00

tissue\_bank

tissue_bank	Frequency	Percent	Cumulative Frequency	Cumulative Percent
	2	1.94	2	1.94
Yes	36	34.95	38	36.89
no	65	63.11	103	100.00

tissue\_bank\_participation

tissue_bank_participation	Frequency	Percent	Cumulative Frequency	Cumulative Percent
	7	6.80	7	6.80
Yes	74	71.84	81	78.64
no	22	21.36	103	100.00

website1

website1	Frequency	Percent	Cumulative Frequency	Cumulative Percent
	2	1.94	2	1.94
Yes	85	82.52	87	84.47
no	16	15.53	103	100.00

website\_comment

website_comment	Frequency	Percent	Cumulative Frequency	Cumulative Percent
	99	96.12	99	96.12
I am interested especially in pathological diagnostic for what?	1	0.97	100	97.09
friendly interface	1	0.97	101	98.06
special interest in guidelines for MM declaration as occupational disease	1	0.97	102	99.03
	1	0.97	103	100.00

mine\_information

mine_information	Frequency	Percent	Cumulative Frequency	Cumulative Percent
	3	2.91	3	2.91
Yes	93	90.29	96	93.20
no	7	6.80	103	100.00

The FREQ Procedure

mine\_information\_comment

mine_information_comment	Frequency	Percent	Cumulative Frequency	Cumulative Percent
	101	98.06	101	98.06
To include my institution in an European tissue bank I would like to know the purpose and which benefit I could get from that	1	0.97	102	99.03
epidemiological data on occupational MM across europe	1	0.97	103	100.00

website\_expectation

website_expectation	Frequency	Percent	Cumulative Frequency	Cumulative Percent
	61	59.22	61	59.22
Advances in diagnosis and treatment	1	0.97	62	60.19
Aims, characteristics of the project, results	1	0.97	63	61.17
Available ongoing trials,	1	0.97	64	62.14
COMPLETE INFORMATION ABOUT IT	1	0.97	65	63.11
Clinical Trial	1	0.97	66	64.08
Clinical Trials, guidelines	1	0.97	67	65.05
Epidemiological data. Outcomes data in different centers	1	0.97	68	66.02
Everything related to MM	1	0.97	69	66.99
Information about opportunities to take part in research projects/clinical trials, or other forms of collaboration with other centers (workshops, conferences, courses, workgroups)	1	0.97	70	67.96
Information regarding MM trials	1	0.97	71	68.93
New surgical approaches for MM	1	0.97	72	69.90
New treatment methods, new drugs, ongoing clinical trials	1	0.97	73	70.87
News, new guidelines, management options	1	0.97	74	71.84
POSSIBILITY OF CLINICAL TRIALS	1	0.97	75	72.82
Pathology	1	0.97	76	73.79
TRIALS/ACTIVITY/RESEARCH INTERESTS OF OTHERS AND OPPORTUNITIES TO COLLABORATE	1	0.97	77	74.76
UPDATED RESEARCH INFORMATION	1	0.97	78	75.73
accessible clinical trials	1	0.97	79	76.70
clinical trials, guidelines,	1	0.97	80	77.67
clinical trials and projects	1	0.97	81	78.64
clinical trials available	1	0.97	82	79.61
clinical trials, european programs	1	0.97	83	80.58
clinical trials, guidelines	1	0.97	84	81.55
current trials	1	0.97	85	82.52
everything	1	0.97	86	83.50
evolution of epidemiology, second line treatments	1	0.97	87	84.47
guidelines, active trials, important articles and congress communications, recent epidemiology	1	0.97	88	85.44
indigence and ongoing clinical trials of interest	1	0.97	89	86.41
information about new guidelines, new clinical trials, progress of international research, etc.	1	0.97	90	87.38
new antibodies for the diagnosis mesothelial hyperplasia from mesothelioma	1	0.97	91	88.35
new trials, guidelines, research studies	1	0.97	92	89.32
online tools for evaluating occupational risk for MM	1	0.97	93	90.29
open protocols related with the treatment of MM	1	0.97	94	91.26
planned and ongoing trials	1	0.97	95	92.23
preclinical research,clinical Research,screening,translational research	1	0.97	96	93.20
surgical especially, but any information is useful	1	0.97	97	94.17
therapy of MM	1	0.97	98	95.15
thoracic surgery informations	1	0.97	99	96.12
trials ongoing, available tissue in biobanks for research, epidemiologic data	1	0.97	100	97.09
trials, relevant treatment guidelines, prognostic tools	1	0.97	101	98.06
useful for practice ! info on ongoing trials in my country	1	0.97	102	99.03
what trials are performed in Europe	1	0.97	103	100.00